

Фортепиано

КАЖДЫЙ ДЕНЬ Я ЛЮБУЮСЬ ПРИРОДОЙ

В. Стрелков

Музыка П. Шевченко

Инструментовка П. Шевченко и В. Еманова

Arranžeerija Ernest Elnathan

Andante $\text{♩} = 77$ *mp* *8va*

3

6

9 **1** 1 Куплет *mf*

12

2

Фортепиано

1 Припев

15

2

p

200 *

18

20

23

2

2

26

28

Фортепиано

30

Фортепиано

mf

33 2 2 Куплет

The musical score for the second couplet (2 Куплет) begins at measure 33. The key signature is B-flat major (two flats). The melody is written in the treble clef, and the accompaniment is in the bass clef. The tempo is marked 'p' (piano). The score consists of six measures. Measures 33-34 show the beginning of the couplet with a melodic phrase in the treble and a supporting bass line. Measures 35-38 continue the musical development with various chordal textures and melodic fragments.

36

This block contains measures 36 through 39 of the musical score. Measure 36 features a treble clef with a key signature of two flats and a 3/4 time signature. The melody begins with a half note G4, followed by a quarter note A4, and then a half note Bb4. The bass line consists of a half note G2, followed by a quarter note A2, and then a half note Bb2. Measure 37 continues the melody with a half note C5, followed by a quarter note D5, and then a half note E5. The bass line consists of a half note C3, followed by a quarter note D3, and then a half note E3. Measure 38 continues the melody with a half note F5, followed by a quarter note G5, and then a half note A5. The bass line consists of a half note F3, followed by a quarter note G3, and then a half note A3. Measure 39 continues the melody with a half note Bb5, followed by a quarter note C6, and then a half note D6. The bass line consists of a half note Bb3, followed by a quarter note C4, and then a half note D4.

39

2 Принеб

42

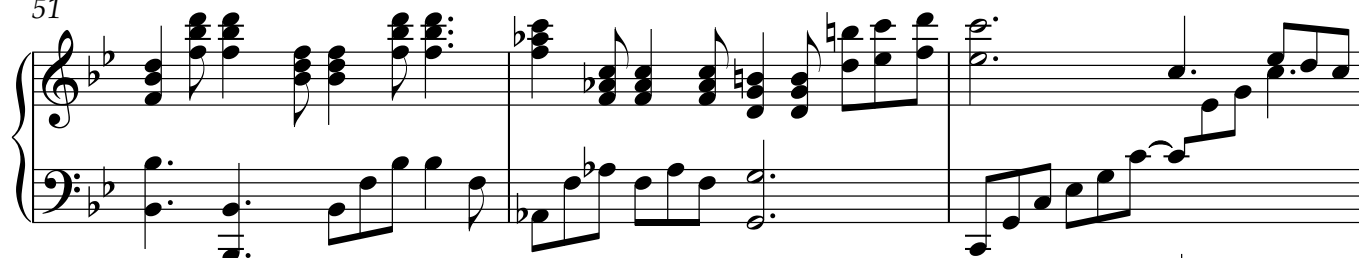
Example 10

45

48



51

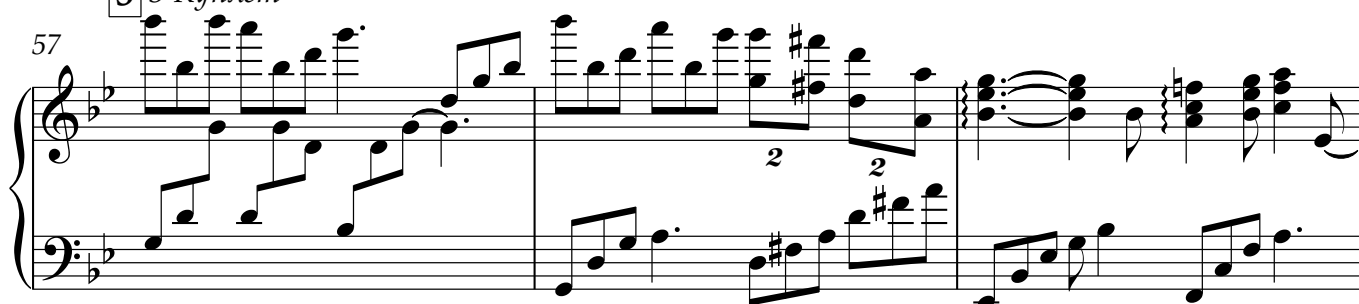


54

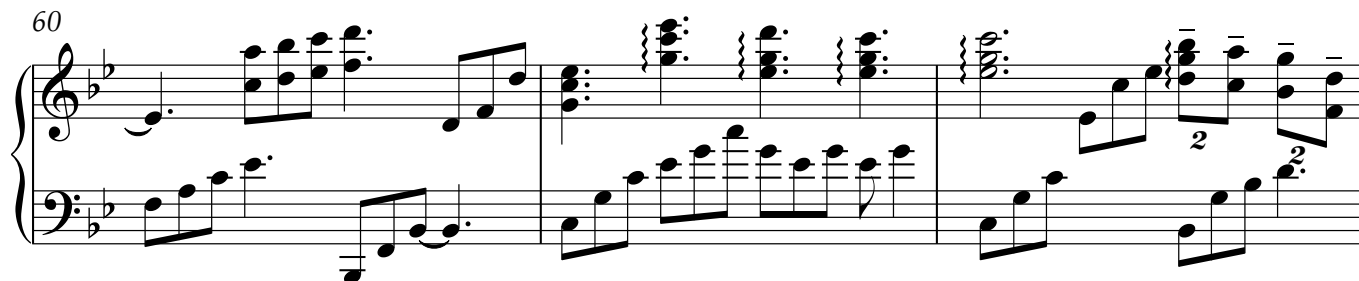


3 3 Куплет

57



60



63



3 Припев

65

67

69

71

Прогресс

73

8va

2

75

8va

2

77

80

4 4 Куплет

83

85

87

89

4 Присев

91

93

96

98

100

103